

Retiform Purpura with Overlying Bullae: Unusual Presentation of Systemic Lupus Erythematosus in Children

Ghasem Miri-Aliabad 

Department of Pediatric Hematology-Oncology, Children and Adolescent Health Research Center, Zahedan University of Medical Sciences, Zahedan, Iran

Bullous lesions in the form of sub-epidermal blisters or due to severe edema and hydropic degeneration of the basal layer rarely occur in children with systemic lupus erythematosus (SLE).¹ Here, we report a 13-year-old girl presenting with anemia and concurrent retiform purpura with overlying bullae on the dorsum of feet; she was diagnosed with SLE.

A 13-year-old girl was referred to our hematology-oncology clinic due to severe anemia, fever, and musculoskeletal pain. The fever was the intermittent and low grade for the last 2 months. Physical examination revealed pallor, arthritis, and arthralgia of both knee, wrist, and ankle joints, violaceous purpuric lesions with overlying bullae on the dorsum of feet and the lower legs (Figure 1A), and palpable purpura in a livedoid, reticulate pattern on the dorsum of hands (Figure 1B). Abdominal examination revealed hepatosplenomegaly. Malar rash, oral ulcers, and cutaneous lesions on the face, neck, or trunk were not identified, but the patient was complaining of photosensitivity.

The complete blood count was as follows: white blood cell: $9.7 \times 10^3/\text{mm}^3$, neutrophil: 83%, hemoglobin: 6.5 g/dL, MCV: 94 fL, platelet: $82 \times 10^3/\text{mm}^3$. The direct Coombs test was positive. Erythrocyte sedimentation rate was 117 mm/h, and lactate dehydrogenase (LDH) was 1808 IU/L. The levels of blood urea nitrogen, creatinine, liver function tests, and alkaline phosphatases were within normal limits. Urinalysis was negative for proteinuria or cell casts. Anti-double stranded DNA (anti-dsDNA) was 256 IU/mL (>24 IU/mL positive), and antinuclear antibody (ANA) was 2.36 (>1.2 positive). Complement levels were normal (C3: 94 mg/dL [normal: 90-180], C4: 14 mg/dL [normal: 10-40]). Anti-tissue transglutaminase IgA (tTG-IgA) was 38 U/mL (>18 positive). Blasts were not seen in peripheral blood smear. No evidence of lupus nephritis was found in this patient. The SLE was diagnosed with positive ANA, positive anti-dsDNA, autoimmune hemolytic anemia, thrombocytopenia, photosensitivity, and arthritis.

Treatment was started with intravenous methylprednisolone pulse (30 mg/kg/day for 3 days) therapy and was continued with oral prednisone (1 mg/kg/day in 3 divided doses) and hydroxychloroquine (200 mg/day); systemic manifestations and skin lesions gradually improved after a week.

Skin is the second most commonly affected organ by SLE. Cutaneous eruptions are lupus-specific (e.g., malar rash) or non-specific (e.g., alopecia). Bullous lesions are non-specific for SLE.^{2,3} Shin et al.,⁴ in a cohort study showed that mucocutaneous manifestation is the most common clinical feature of juvenile SLE.

Vesiculobullous lesions occur in less than 5% of children with SLE; they might be isolated or accompanied by other cutaneous lesions.⁵ These patients are usually young women in their second decade of life.⁶ These lesions should be considered in the differential diagnosis of other cutaneous vesiculobullous lesions of infectious and non-infectious origin and can cause diagnostic and therapeutic challenges.⁷ Although, in some research, there was a correlation between these lesions and lupus nephritis,^{1,8} there was no evidence of lupus nephritis in this patient. In conclusion, SLE should always be considered in children presenting with purpuric eruptions with overlying bullae.

Corresponding Author:
Ghasem Miri-Aliabad
ghmiri1357@gmail.com
Received: January 11, 2021
Accepted: January 26, 2021

Content of this journal is licensed under a Creative Commons Attribution-NonCommercial 4.0 International License.



Cite this article as: Miri-Aliabad G. Retiform purpura with overlying bullae: Unusual presentation of systemic lupus erythematosus in children. *Turk Arch Pediatr.* 2021; 56(4): 403-404.

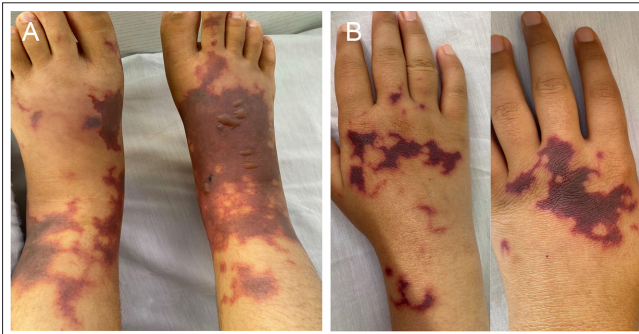


Figure 1. Retiform, violaceous purpuric lesions with overlying bullae on dorsum of feet and on the lower legs (a) and palpable purpura in a livedoid, reticulate pattern on the dorsum of hands (b).

Informed Consent: Written informed consent was obtained from the patient's parents.

Peer-review: Externally peer-reviewed.

Author Contributions: Concept – G.M.A.; Design– G.M.A.; Supervision – G.M.A.; Data Collection and/or Processing – G.M.A.; Analysis and/or Interpretation – G.M.A.; Literature Review – G.M.A.; Writing – G.M.A.; Critical Review – G.M.A.

Acknowledgments: We thank the patient and her family for their helpful participation in this work.

Conflict of Interest: The authors have no conflicts of interest to declare.

Financial Disclosure: The author declared that this study has received no financial support.

REFERENCES

1. Sáez-de-Ocariz M, Espinosa-Rosales F, López-Corella E, de León-Bojorge B. Bullous lesions as a manifestation of systemic lupus erythematosus in two Mexican teenagers. *Pediatr Rheumatol Online J.* 2010;8:19. [\[CrossRef\]](#)
2. Cardinali C, Caproni M, Bernacchi E, Amato L, Fabbri P. The spectrum of cutaneous manifestations in lupus erythematosus—the Italian experience. *Lupus.* 2000;9(6):417–423. [\[CrossRef\]](#)
3. Kole AK, Ghosh A. Cutaneous manifestations of systemic lupus erythematosus in a tertiary referral center. *Indian J Dermatol.* 2009;54(2):132–136. [\[CrossRef\]](#)
4. Sahin S, Adrovic A, Barut K, et al. Juvenile systemic lupus erythematosus in Turkey: demographic, clinical and laboratory features with disease activity and outcome. *Lupus.* 2018;27(3):514–519. [\[CrossRef\]](#)
5. Dhir R, Desylva PLK, Gehi N, et al. Pericardial effusion with vesiculobullous lesions in a young female. Bullous systemic lupus erythematosus (bullous SLE). *Indian J Dermatol Venereol Leprol.* 2006;72(2):175–177. [\[CrossRef\]](#)
6. Vassileva S. Bullous systemic erythematosus. *Clin Dermatol.* 2004;22(2):129–138. [\[CrossRef\]](#)
7. Sebaratnam DF, Murrell DF. Bullous systemic lupus erythematosus. *Dermatol Clin.* 2011;29(4):649–653. [\[CrossRef\]](#)
8. Fujimoto W, Hamada T, Yamada J, Matsuura H, Iwatsuki K. Bullous systemic lupus erythematosus as an initial manifestation of SLE. *J Dermatol.* 2005;32(12):1021–1027. [\[CrossRef\]](#)